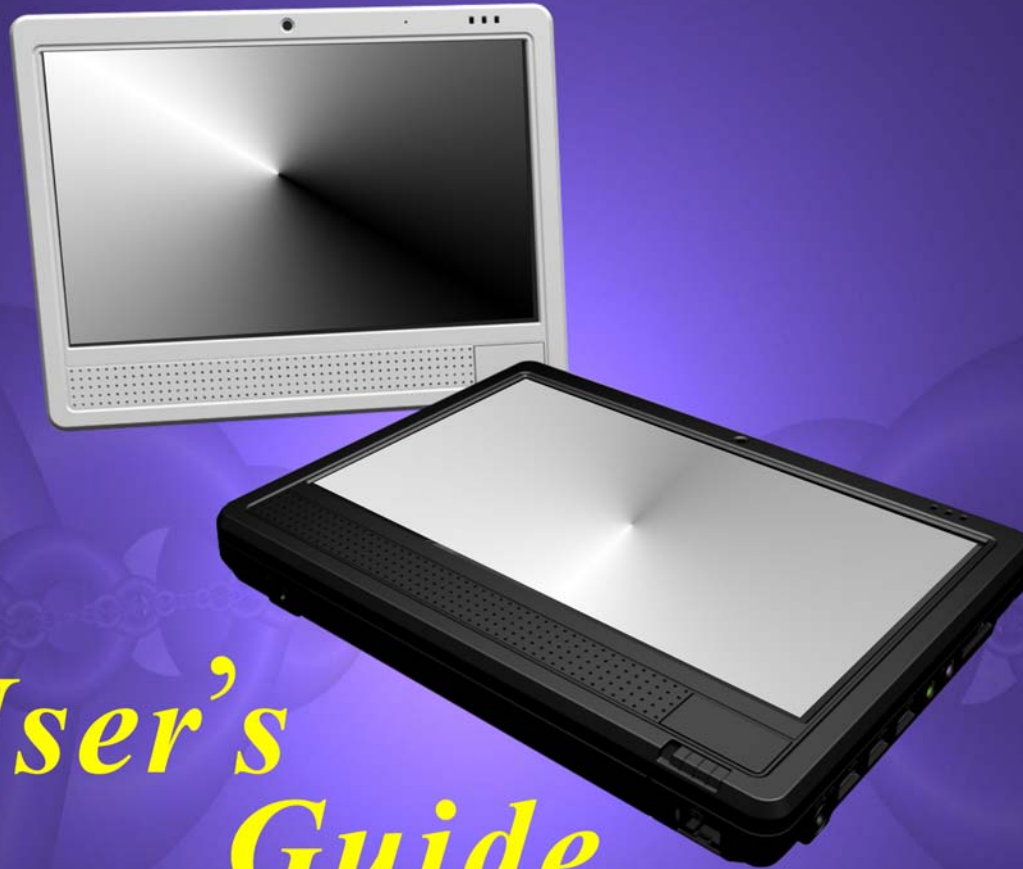


# *Tablet PC*



*User's  
Guide*



## Preface

---

©Copyright 2007

All Rights Reserved.

The information in this document is subject to change without prior notice in order to improve reliability, design and function and does not represent a commitment on the part of the manufacturer.

In no event will the manufacturer be liable for direct, indirect, special, incidental, or consequential damages arising out of the use or inability to use the product or documentation, even if advised of the possibility of such damages.

This document contains proprietary information protected by copyright. All rights are reserved. No part of this manual may be reproduced by any mechanical, electronic, or other means in any form without prior written permission of the manufacturer.

## Safety Notices

---

1. Please read these safety instructions carefully.
2. All precautions and warnings on the equipment should be carefully noted.
3. Please disconnect the computer from the AC outlet before cleaning.
4. Never pour any liquids into any openings or directly onto the computer unit. This could result in fire or electrical shock.
5. Ensure the voltage range of the power outlet is between 100V and 240V before connecting the computer unit. Exceeding the maximum rated voltage may cause damage to the AC adapter or to the computer. This could result in fire or electrical shock.
6. Do not leave this equipment in a non-temperature controlled environment; storage temperatures below 4°C (39°F) or above 35°C (95°F) may damage the unit.

**! CAUTION** *To reduce the risk of an electric shock, which could cause personal injury, please follow all safety notices. The symbols shown are used in your documentation and on your equipment to indicate safety hazards.*

**! CAUTION** *Lithium batteries can be dangerous. Danger of explosion if battery is incorrectly replaced. Replace only with the same or equivalent type recommended by the manufacturer. Dispose of used batteries according to the manufacturer's instructions.*

**! CAUTION** *Under no circumstances should the user attempt to disassemble the power supply. The power supply has no user-replaceable parts. Inside the power supply are hazardous voltages that can cause serious personal injury. A defective power supply must be returned to your dealer.*

### **Safety Notices for the Power Cord**

---

This equipment has a 3-wire power cord. Replace the power cord if it becomes damaged. Contact your dealer for an exact replacement.

In the U.S.A. and Canada, the power cord must be a UL-listed detachable power cord (in Canada, CSA-certified).

---

3-wire cord SVT or SJT, 18 AWG, 3-conductor

---

Provided with a molded-on cord connector body at the other end. The cord length must not exceed 3 meters.

Outside the U.S.A. and Canada, the plug must be rated for 250 VAC, 2.5 amp minimum, and must display an international agency approval marking. The cord must be suitable for use in the end-user's country. Consult your dealer or the local electrical authorities if you are unsure of the type of power cord to use in your country. Voltage changes occur automatically in the power supply.

### **Notice of EMC Compliance**

---

This equipment has been tested and found to comply with the limits for a Class B digital device, pursuant to Part 15 of the FCC Rules. These limits are designed to provide reasonable protection against harmful interference in a residential installation.

This equipment generates, uses, and can radiate radio frequency energy and if not installed and used in accordance with the instruction manual may cause harmful

interference to radio communications. However, there is no guarantee that interference will not occur in a particular installation. If this equipment does cause harmful interference to radio or television reception, which can be determined by turning the equipment off and on, the user is encouraged to try to correct the interference by one or more of the following measures:

- ▶ Reorient or relocate the receiving antenna.
- ▶ Increase the separation between the equipment and receiver.
- ▶ Connect the equipment into an outlet on a circuit different from that to which the receiver is connected.
- ▶ Consult the dealer or an experienced technician for help.

Use only shielded I/O cables to connect I/O devices to this equipment.

You are cautioned the changes or modifications not expressly approved by the party responsible for compliance could void your authority to use the equipment.

This device complies with Part 15 of the FCC Rules. Operation is subject to the following two conditions: (1) this device will not cause harmful interference, and (2) this device must accept any interference it receive including interference that may cause undesired operation.

This device and its antenna(s) must not be co-located or operating in conjunction with any other antenna or transmitter.

#### ***FCC Radiation Exposure Statement***

---

This Transmitter has been demonstrated co-location compliance requirements with (Wireless LAN/Model No: Q802XKG).This transmitter must not be co-located or operating in conjunction with any other antenna or transmitter.

- ▶ This equipment complies with FCC RF radiation exposure limits set forth for an uncontrolled environment. To maintain compliance with FCC RF exposure compliance requirements, avoid direct contact to the transmitting antenna during transmitting.

- ▶ Any changes or modifications (including the antennas) made to this device that are not expressly approved by the manufacturer may void the user's authority to operate the equipment.

#### ***Canadian EMI Compliance Statement***

---

This Class B digital apparatus meets all requirements of the Canadian Interference - Causing Equipment Regulations.

#### ***European Union CE Marking Declaration***

---

This product has been tested and found to comply with the EMC requirement subject to the EU directive for CE marking.

#### ***CE Declaration of Conformity***

For the following equipment: Ultra Mobile PC

**CE 0984** 

Is herewith confirmed to comply with the requirements set out in the Council Directive on the Approximation of the Laws of the Member States relating to Electromagnetic Compatibility (89/336/EEC), Low-voltage Directive (73/23/EEC) and the Amendment Directive (93/68/EEC), the procedures given in European Council Directive 99/5/EC and 89/336/EEC.

The equipment was passed. The test was performed according to the following European standards:

- ▶ EN 300 328 V.1.6.1 (2004)
- ▶ EN 301 489-1 V.1.4.1 (2002) / EN 301 489-17 V.1.2.1 (2002)
- ▶ EN 50371: 2002
- ▶ EN 60950-1: 2001

***Regulatory statement (R&TTE / WLAN IEEE 802.11b & 802.11g)***

European standards dictate maximum radiated transmit power of 100mW EIRP and frequency range 2.400-2.4835GHz; In France, the equipment must be restricted to the 2.4465-2.4835GHz frequency range and must be restricted to indoor use.

- ▶ Inside the buildings with a power (WORSE \*) maximum of 100 MW on all the frequency band 2400-2483,5 MHz,
- ▶ Outside the buildings with a power (WORSE \*) maximum of 100 MW on the part 2400-2454MHz and with a power (WORSE \*) maximum of 10 MW on the part 2454-2483MHz

***Laser Compliance Statement for CD-ROM, DVD-ROM, CD-RW and DVD/CD-RW Combo Drives***

---



The CD-ROM, DVD-ROM, CD-RW and DVD/CD-RW Combo drive for this computer are laser products. The classification label of the drive is located on the bottom of the drive. Below is a sample of the classification label;

CLASS 1 LASER PRODUCT

LASER KLASSE 1

LOUKAN 1 LASERLAITE

APPAREIL A LASER DE CLASSE 1

KLASS 1 LASER APPARAT

The drive is certified in the USA to comply with the requirements of the Department of Health and Human Services 21 Code of Federal Regulations (DHHS 21 CFR) Subchapter J. for Class 1 laser products.

In other countries the drive is certified to comply with the requirements of EN60825.

## ***Table of Content***

---

|  |           |
|--|-----------|
| <b>CHAPTER 1: BEFORE YOU START</b> .....             | <b>1</b>  |
| Let your Computer acclimatize itself .....           | 1         |
| Placement of your Computer.....                      | 1         |
| Suitable place to work .....                         | 2         |
| <b>CHAPTER 2: INTRODUCTION</b> .....                 | <b>3</b>  |
| Unpacking the Computer.....                          | 3         |
| Front View .....                                     | 4         |
| Side 1 .....   | 6         |
| Side Two.....  | 6         |
| Side Three.....                                      | 7         |
| Bottom Side.....                                     | 8         |
| <b>CHAPTER 3: GETTING STARTED</b> .....              | <b>11</b> |
| Inserting the Battery Pack .....                     | 11        |
| Removing the Battery Pack.....                       | 13        |
| Operating on Battery Power .....                     | 15        |
| Charging the Battery Pack .....                      | 15        |
| <b>CHAPTER 4: USING THE COMPUTER</b> .....           | <b>16</b> |
| Battery Status .....                                 | 16        |
| Battery Low Warning .....                            | 16        |
| CMOS Battery .....                                   | 17        |
| A Menu 1 .....                                       | 18        |
| A Menu 2 .....                                       | 19        |
| Battery Status .....                                 | 21        |
| Tools.....   | 22        |
| Display.....   | 23        |
| Display.....   | 24        |
| Pen .....  | 33        |
| <b>CHAPTER 5: TROUBLESHOOTING</b> .....              | <b>34</b> |
| A freeze on the system during program operation..... | 34        |

|  |           |
|--|-----------|
| System Not Resuming Operation.....   | 34        |
| The LCD screen is too dark or too bright .....   | 34        |
| Beeping sound.....   | 35        |
| The system can not shutdown properly .....   | 35        |
| What are the major steps to follow when the system does not turn on properly after it shutdown.... | 35        |
| How to extend battery life.....  | 35        |
| Wireless LAN connection is disconnected after 2~3 minutes, and the connection is not recovered.    | 35        |
| The computer is unable to connect to the Internet.....   | 36        |
| The Wireless LAN is connected, but I can not connect to or to another computer.....                | 36        |
| The signal strength is excellent but cannot connect to the network.....                            | 36        |
| Contacting Your Dealer .....   | 36        |
| What steps should be taken when water accidentally get inside the Tablet PC.....                   | 37        |
| The Tablet PC could not resume after it enter the Standby mode.....                                | 37        |
| The system can't resume operation .....  | 38        |
| Display problem.....   | 38        |
| <b>APPENDIX A: SPECIFICATION.....</b>  | <b>40</b> |



# Chapter I

## Before You Start

This manual will help you get the most from your computer. If you are a less experienced user, you should read through the manual carefully before using your computer.

### ■ What to do Before You Work on your Computer

#### ***Let your Computer acclimatize itself***

---

Rapid changes in temperature such as those from the cold outdoors to a warm office would not be suitable for your system.



**NOTE** *Do not power up your system immediately if it has been exposed to hot or cold conditions. Instead, allow the system to adjust gradually to room temperature over a three to four hour period.*

#### ***Placement of your Computer***

---

Choose a suitable place for your system that's not too hot, too cold, too dark, or too bright. Glare can make it difficult to read the screen.

- ▶ Allow sufficient air circulation around the computer when you are working indoors
- ▶ Try to keep the system components from being destroyed if it is over heated
- ▶ Do not block the ventilation opening
- ▶ Do not place your computer in direct sunlight

### ***Suitable place to work***

---

Your computer will run well under most conditions but avoid extreme temperatures and humidity levels.

There are some things you can tolerate that the computer can't – things like static electricity, dust, water, steam and oil.




**NOTE** *A lithium-ion battery pack is included for those who are frequent travelers. When you are running your computer on battery power for the first time, remove the battery from the package, install it into the system and recharge the battery to fully prepare for service.*

# Chapter 2

## Introduction

### ■ Introducing your Computer

Your computer features the latest advances in portable computing technology. The computer modular design provides maximum expandability without compromising portability.

 **WARNING:** *Please never try to disassemble the Tablet PC and we will not be responsible for any damage caused by this action.*

### Unpacking the Computer

The computer comes securely packaged in a shipping carton. Please contact your dealer if you find that anything is missing or damaged after examining the contents. The shipping carton should contain the following items:

- ▶ AC-DC Adapter
- ▶ Power Cord
- ▶ Support CD
- ▶ Quick Guide
- ▶ Stylus Pen

Do not throw the packaging materials away. You may need them later if you have to ship the computer.

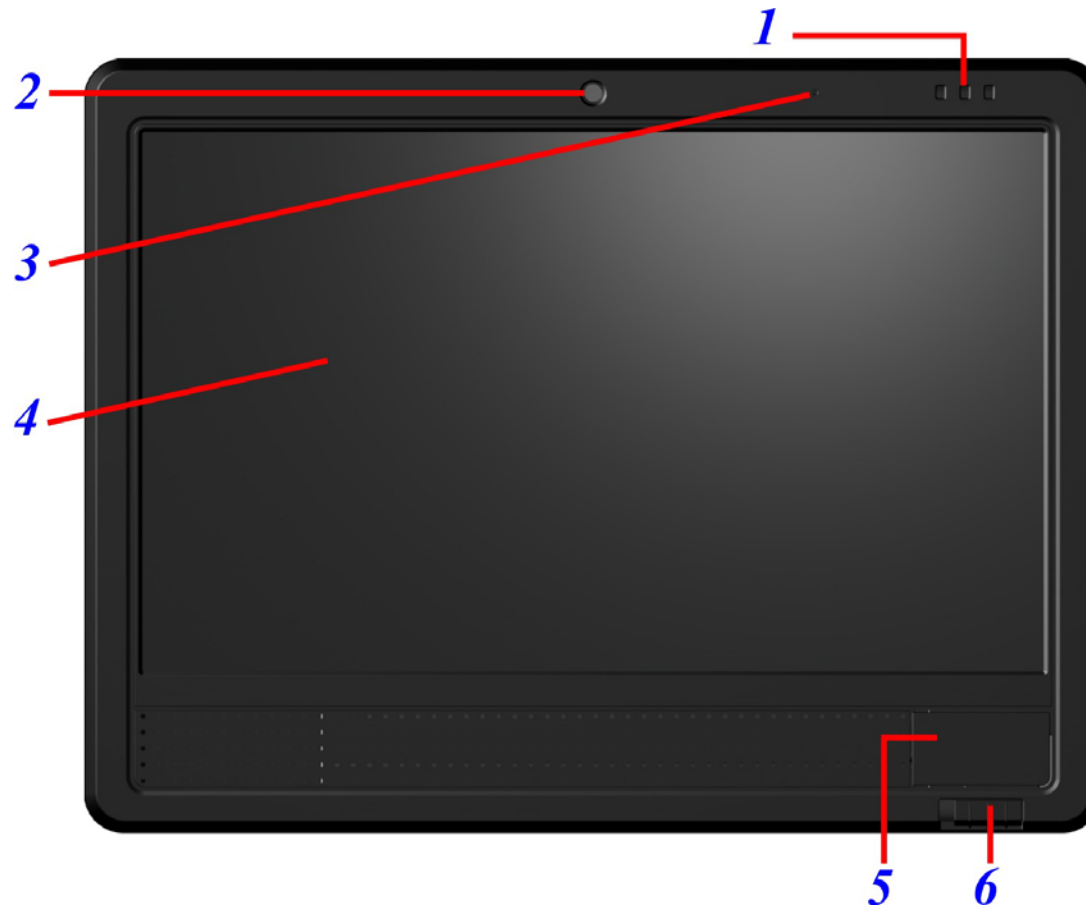


## NOTE

*Because of customer requirement, some of the features mentioned in this manual might not be included on your computer or may differ slightly.*

### ■ Getting to Know Your Computer

#### Front View



1. LED Indicator



2. CMOS Camera

This is where the built-in camera located where you can use for any video conferencing application.

3. Microphone

Use this microphone when you are on video conferencing

4. LCD Display

This system is equipped with a 10.2 inch display with 1024x600 WXGA LCD.

5. Power Switch

The power switch turns the computer on and off.

6. Power Switch Lock/Unlock Latch

This latch serve as safety precaution to avoid you from accidentally pressing the power switch thus causing the system to power down.



Slide the latch into this side which indicates it is in open position enables you to power on the system with a slight pressing of the power switch



Slide the latch into this side which indicates it is in close position where you might have to press the power switch harder for you to power on the system.

## Side 1

---



**1.** Kensington Lock Keyhole

Your computer includes a keyhole to be used with a standard Kensington lock. You can connect the computer lock to a large object with the Kensington lock to prevent theft of your system.

**2.** Ethernet / LAN Port

The port connects to a network hub via the RJ-45 cable and also conforms to 10/100 Base-TX transmission protocol

## Side Two

---



- 1.** DC IN Jack  
Plug the AC adapter into this jack.
- 2.** USB Port  
Your computer includes two Universal Serial Bus (USB) 2.0 ports. USB2.0 is the latest development in Plug and Play technology.
- 3.** Microphone Jack  
The microphone jack (3.5-mm diameter) is where you connect a microphone.
- 4.** Stereo Headphone  
The stereo headphone jack (3.5-mm diameter) is where you connect the headphones or external speakers.
- 5.** Card Reader  
The slot is where PC Card is inserted. The system also supports MMC, SD, 2-1 card reader.
- 6.** Pen Compartment  
Secures the pen to the system.

### ***Side Three***

---



**1.** Ventilation Opening

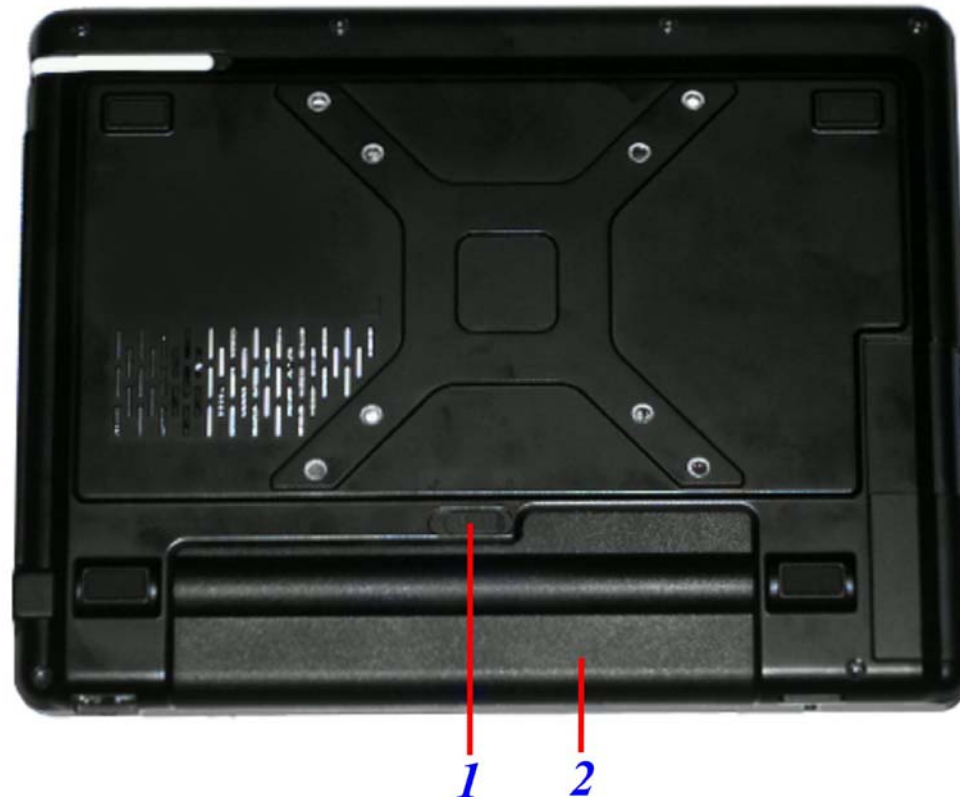
Please don't block this opening that serve as cooling purpose for the system.

**2.** External VGA Port

The 15-pin VGA analog port is for connecting the external CRT monitor or projector.

***Bottom Side***

---



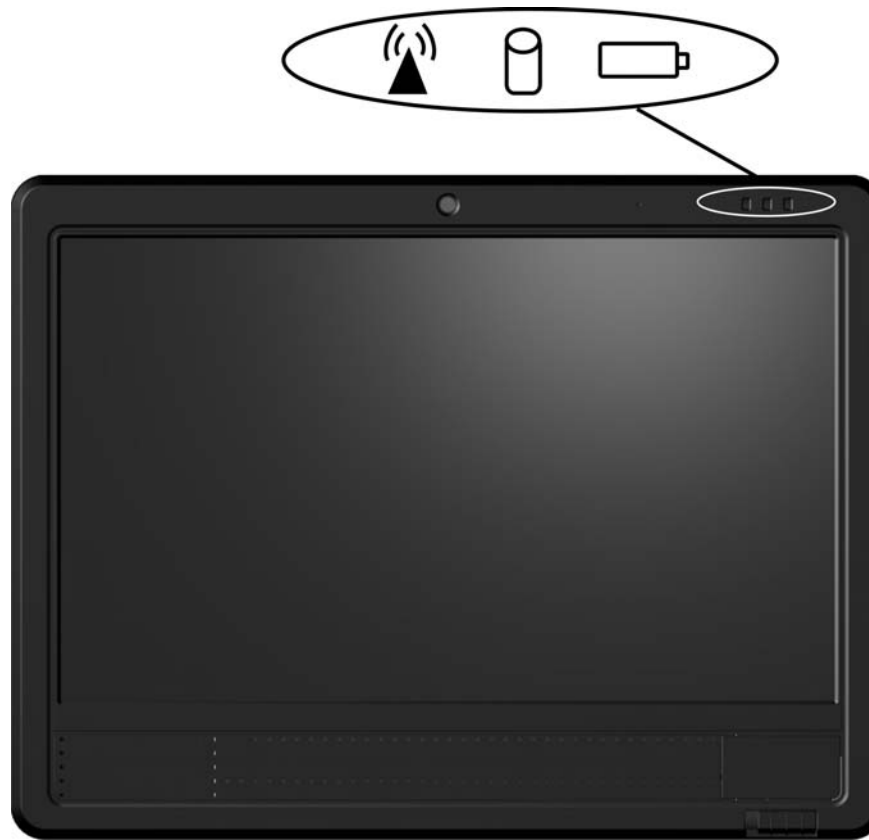
1. Battery Latch




Use this latch to release the battery from its bay.

2. Battery

Your computer comes equipped with a factory-installed battery pack module. After the battery runs down, the module can be removed and replaced with a charged battery.

■ **System Status Lights (LED)**



|   |                    |   |
|---|--------------------|---|
|  | Wireless Indicator | WLAN ON: Orange   |
|  | HDD Indicator      | HDD Accessing (Blinking: Green color)   |
|  | Battery Indicator  | <p>The battery charge indicator (LED) shows the status of the battery's power as follows:</p> <p><b>Green:</b> This indicate the system is power ON.</p> <p><b>Orange:</b> This indicate the battery is charging when the system is power off.</p> <p><b>Off:</b> This indicate the system is power off and the system stop charging.</p> |

# Chapter 3

## Getting Started

### ■ Setting Up the Computer

- ▶ Remove the computer from its package.
- ▶ Insert the battery pack into the computer so the pack can start charging.
- ▶ Connect the computer to an external power source. Turn on the computer.

### ■ Inserting and Removing the Battery Pack

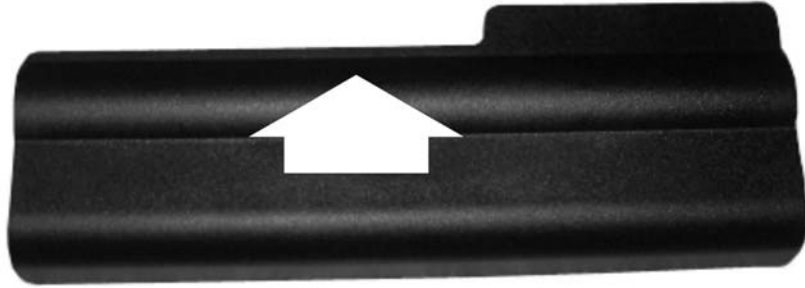
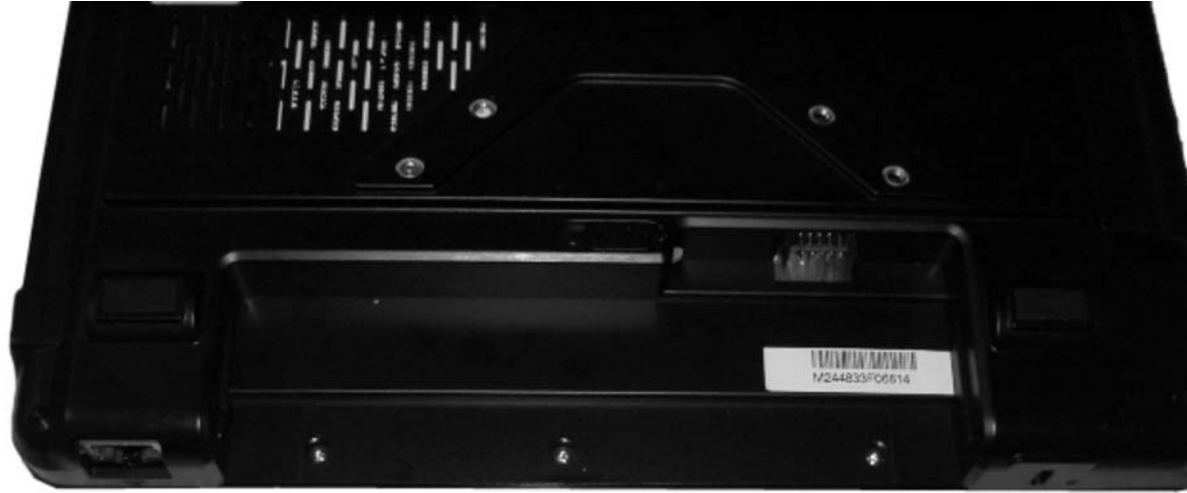
#### *Inserting the Battery Pack*

---



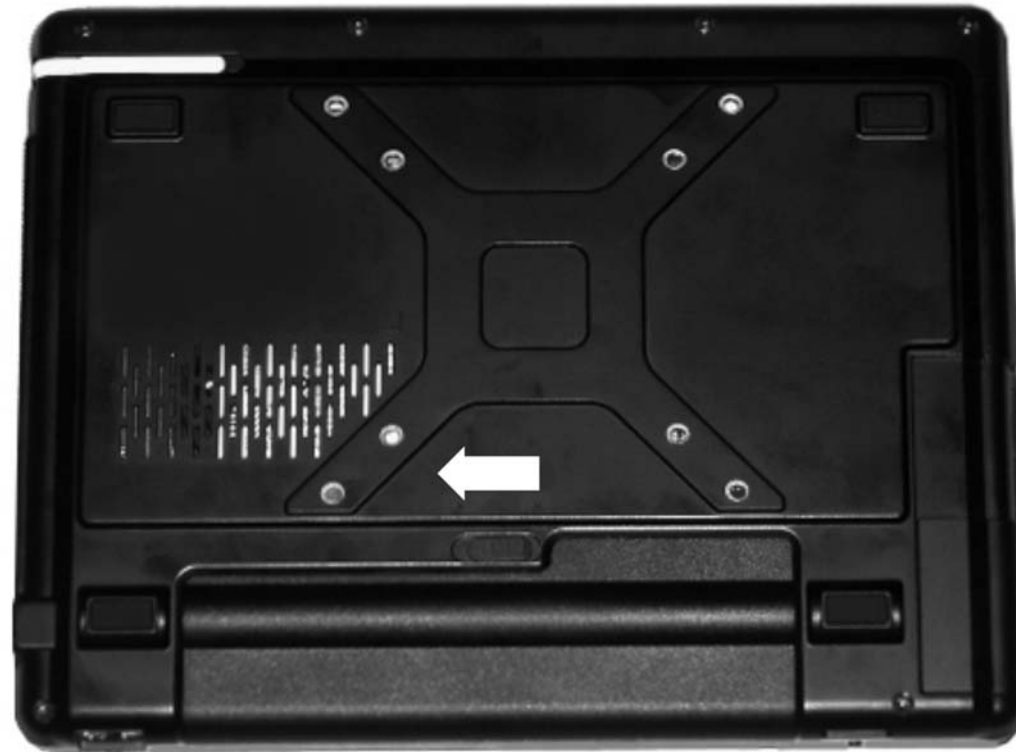
**NOTE** *Before inserting the battery, be sure the front side of the battery is facing the top side of the system as shown in the illustration.*

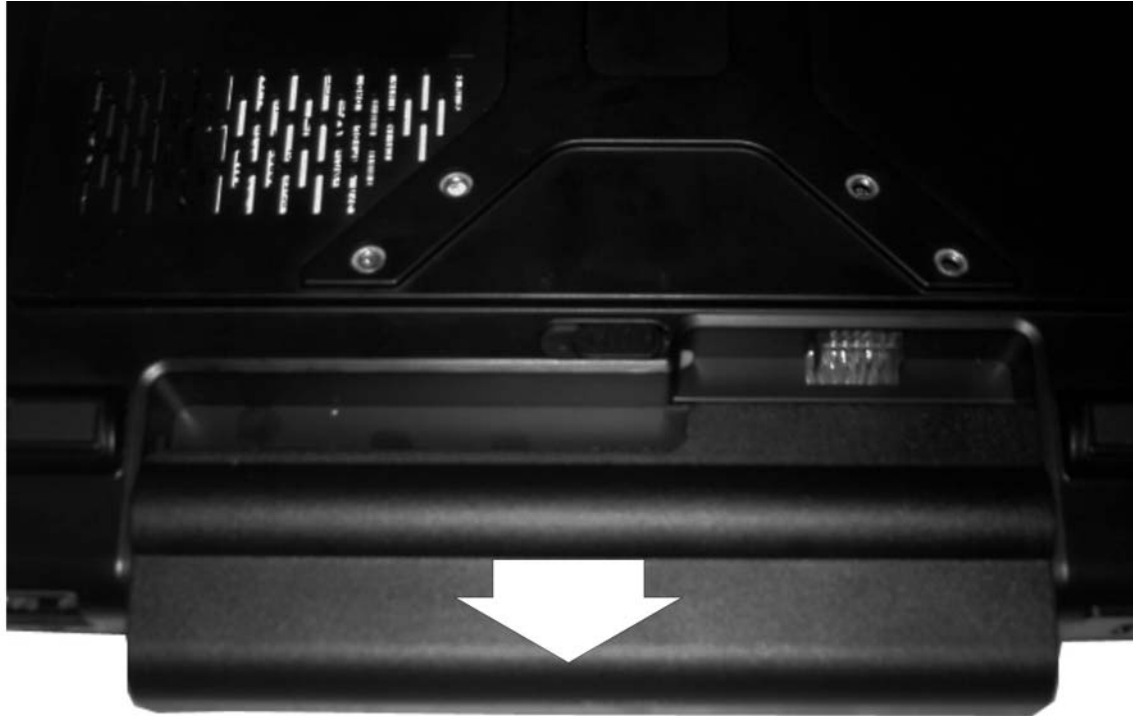
- ▶ Turn over the computer and place it on a solid, flat surface.
- ▶ Align the battery into the battery compartment.
- ▶ Insert back the battery into the compartment and push down until the battery latch click sound to indicate it is lock.



## *Removing the Battery Pack*

---






## ■ Connecting the Computer to an External Power Source

To connect the computer to an external AC power source using the AC adapter:

- ▶ Plug the AC adapter cable into the AC power connector on the computer.
- ▶ Plug one end of the power cord into an electrical outlet and the other end into the AC adapter.

**⚡ WARNING:** *To prevent damage to your computer, please do not use inferior extension cords. An AC adapter comes with your computer. Never use a different kind of adapter to power the computer or other electrical devices.*

Whenever possible, keep the AC adapter plugged into the computer and an electrical outlet to recharge the battery.

 **WARNING:** *Don't try to reset your computer while the hard disk is in use as it may result in the loss or destruction of your data.*

### ***Operating on Battery Power***

---

Your computer comes with a rechargeable battery pack that lets you operate the computer without an external power source.

When the battery pack is fully charged, you can operate the computer for approximately 3 hours pack under typical condition.

### ***Charging the Battery Pack***

---

The installed battery pack charges automatically whenever the computer is connected to the AC adapter and an external power source.

The first time you use the battery, be sure to fully charge the battery than fully discharge the battery and recharge it until it is fully charged.

# Chapter 4

## Using the Computer

### ■ Automatic Battery Pack Charging Function

You can automatically charge the battery pack by using the AC Adapter.



*The charge time is almost two hours when the computer power is turned off.*

### ***Battery Status***

---

Windows Vista has an applet in the Control Panel that will display an icon in the Windows taskbar indicating when the computer is running on battery power or is attached to the AC adapter.

This applet also displays a meter that indicates how much charge is remaining in the battery.


### ***Battery Low Warning***

---

When the battery is in low status, its LED indicator will blink continuously and you will hear beeping sound.

## CMOS Battery

There is a small built-in battery pack that supplies power to the system in order to maintain certain system information while the power is off. If the computer is left without a power source for long period of time, this battery will be exhausted and system information will be lost.

 **NOTE** *To avoid damage, only use replacement batteries recommended by System provider. To prevent the loss of data when the system loses power, do not remove the battery pack while the power is on.*

### ■ Using the A-Menu

Drag the “A-Menu” located on the right side of the Tablet PC to display the “A-Menu” window dialog box.



## A Menu 1

### Resolution



and 1024x600.

*Click: on the resolution icon to switch the resolution between 800x600*

### Keyboard



Keyboard



Standard Keyboard

## *A Menu 2*

---



### Adjusting the Brightness

The brightness can be adjusted using the selection provided by the **A-Menu**.

Scroll up to increase and scroll down to decrease the screen brightness of your system.



### Adjusting the Volume

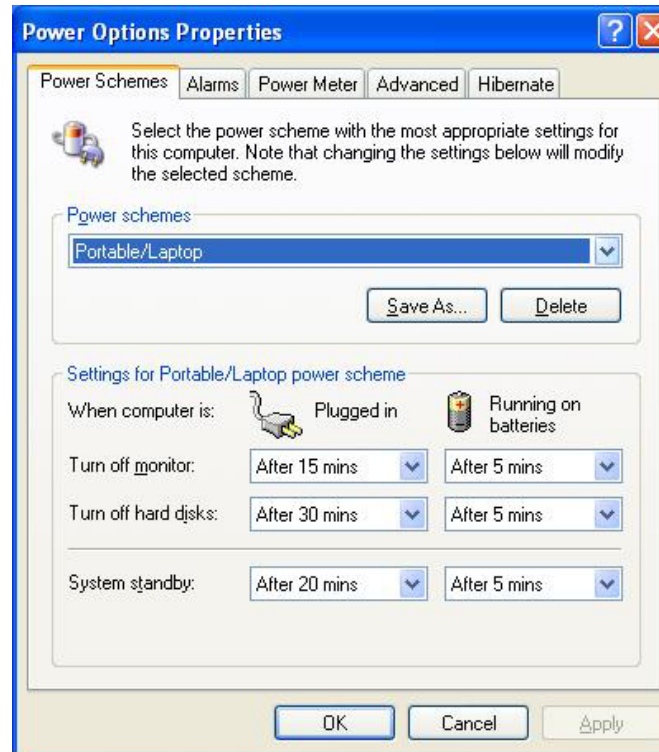
You can also adjust the volume of your system using this application.

Scroll up to increase and scroll down to decrease the volume of your system.

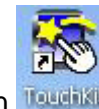


## Battery Status

Press on the battery icon to open up the Power Schemes Properties.

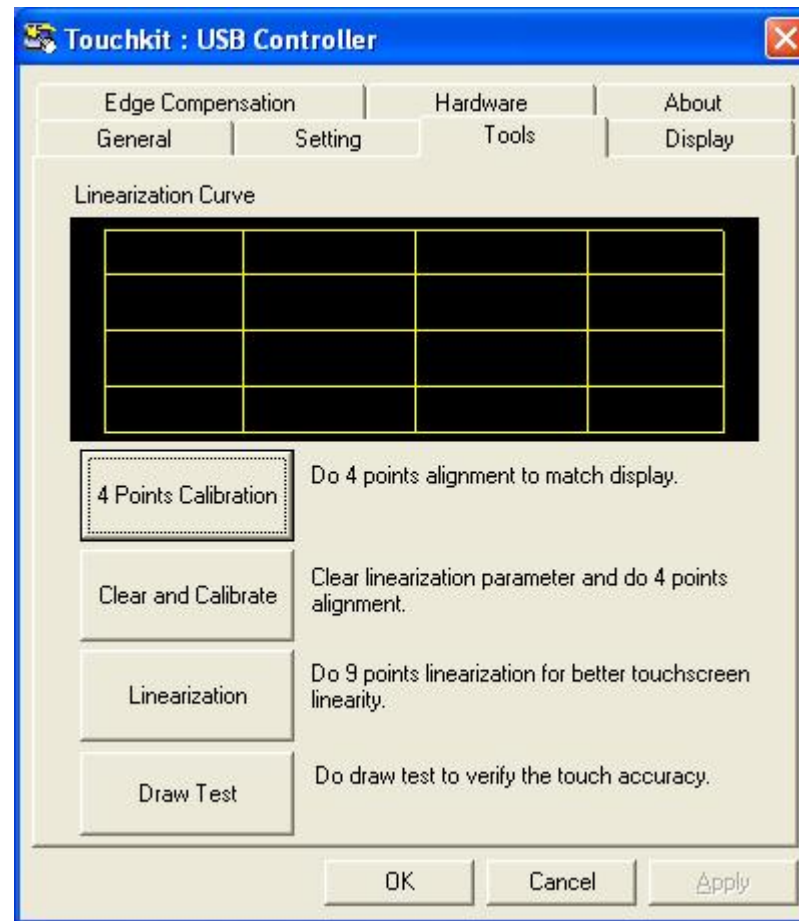


## ■ TouchKit Application



If your cursor pointer does not function well, you can select the “**TouchKit**” icon. These applications includes: “**Tools**”, “**Displays**”, “**Edge Compensation**” to adjust your screen display when applying the touch function.

## Tools

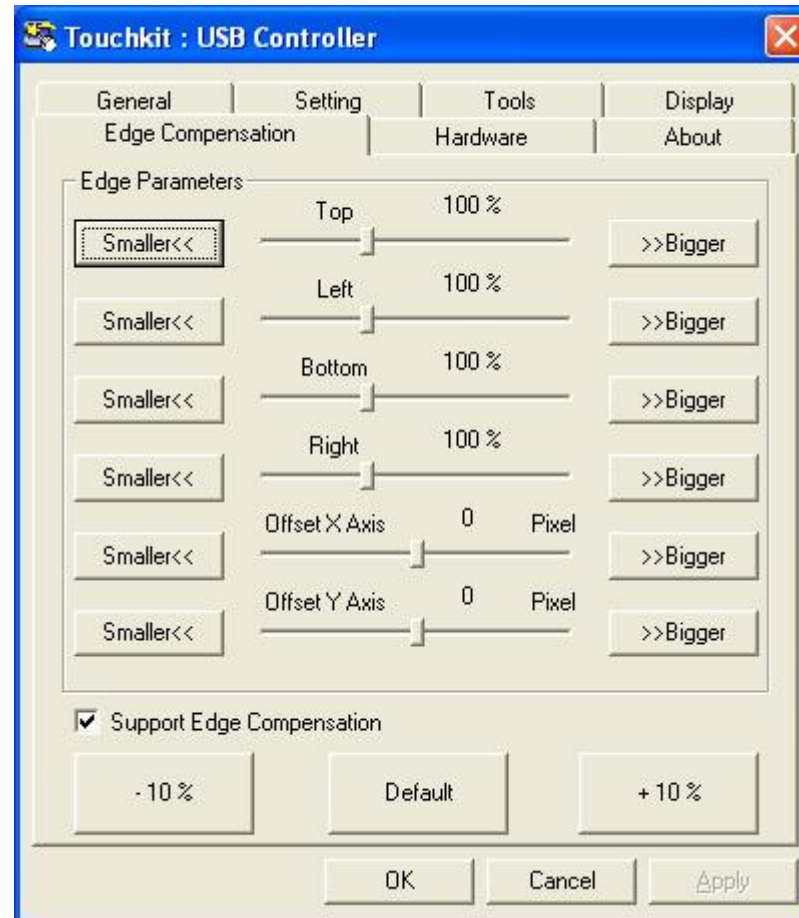


This setting will enable you to adjust the screen orientation.

These are **“4 Points Calibration”**, **“Clear and Calibrate”**, **“Linearization”** and **“Draw Test”**.

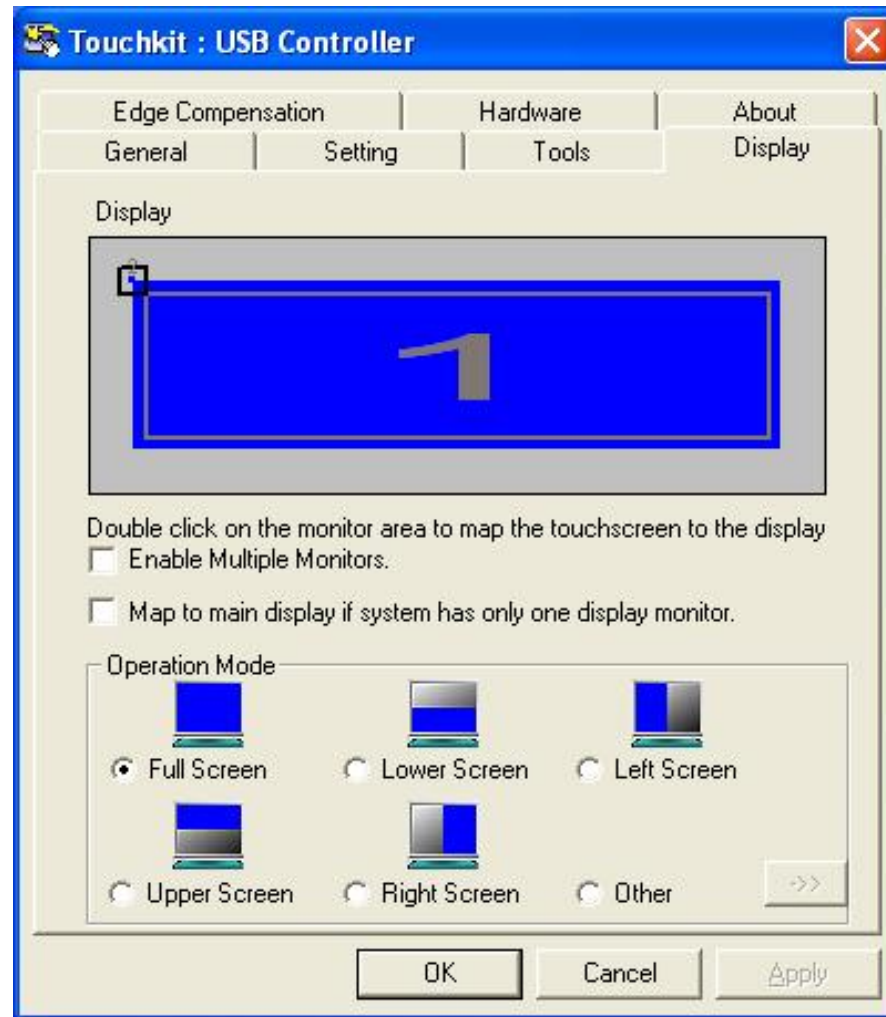
## Display

This function enables you to adjust on the buttons of your computer.



## Display

Use this function to apply on the location on how your pen will touch the screen display.



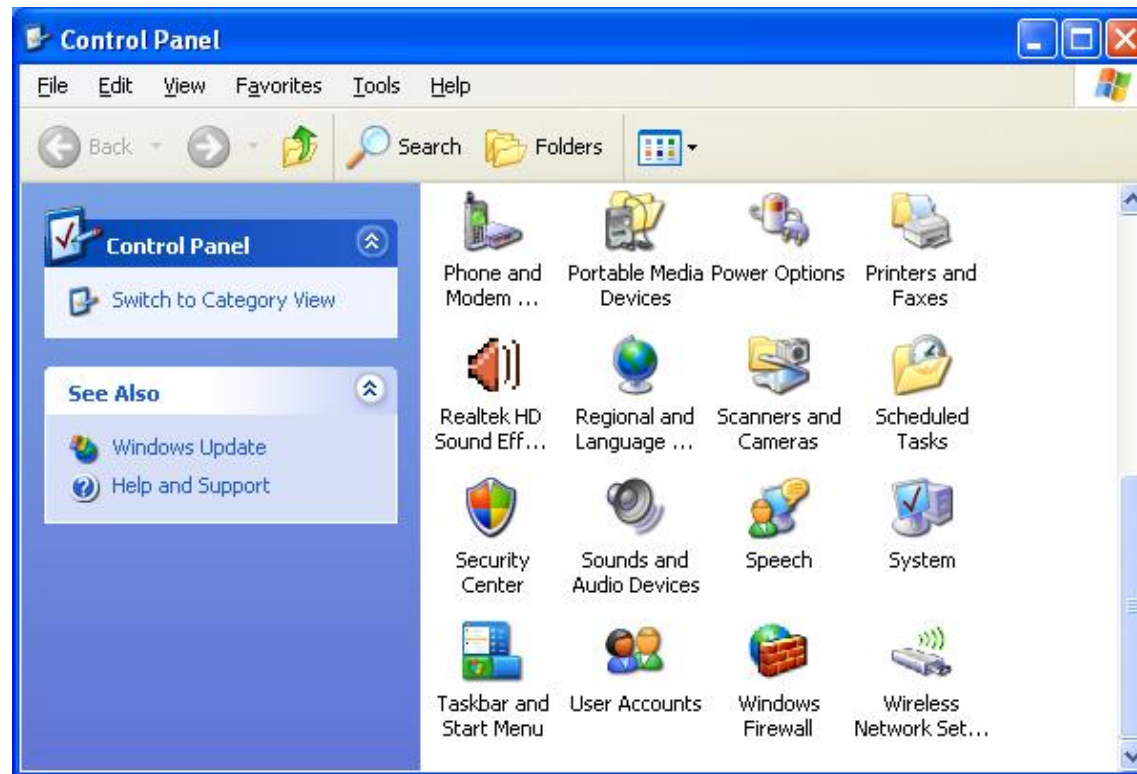
## ■ Built-in Camera

To execute the camera of your system, do the following:

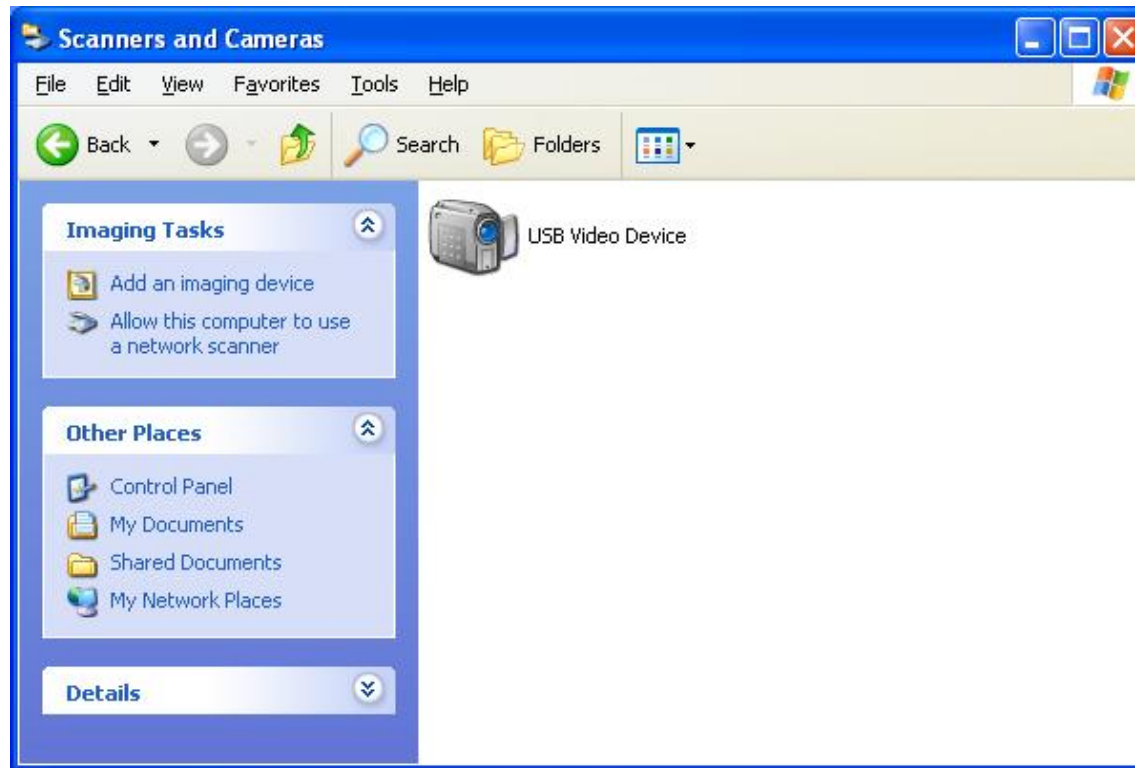
- ▶ From Start, proceed to the “Control Panel”.



- ▶ Double click on the “Scanners and Cameras” item.



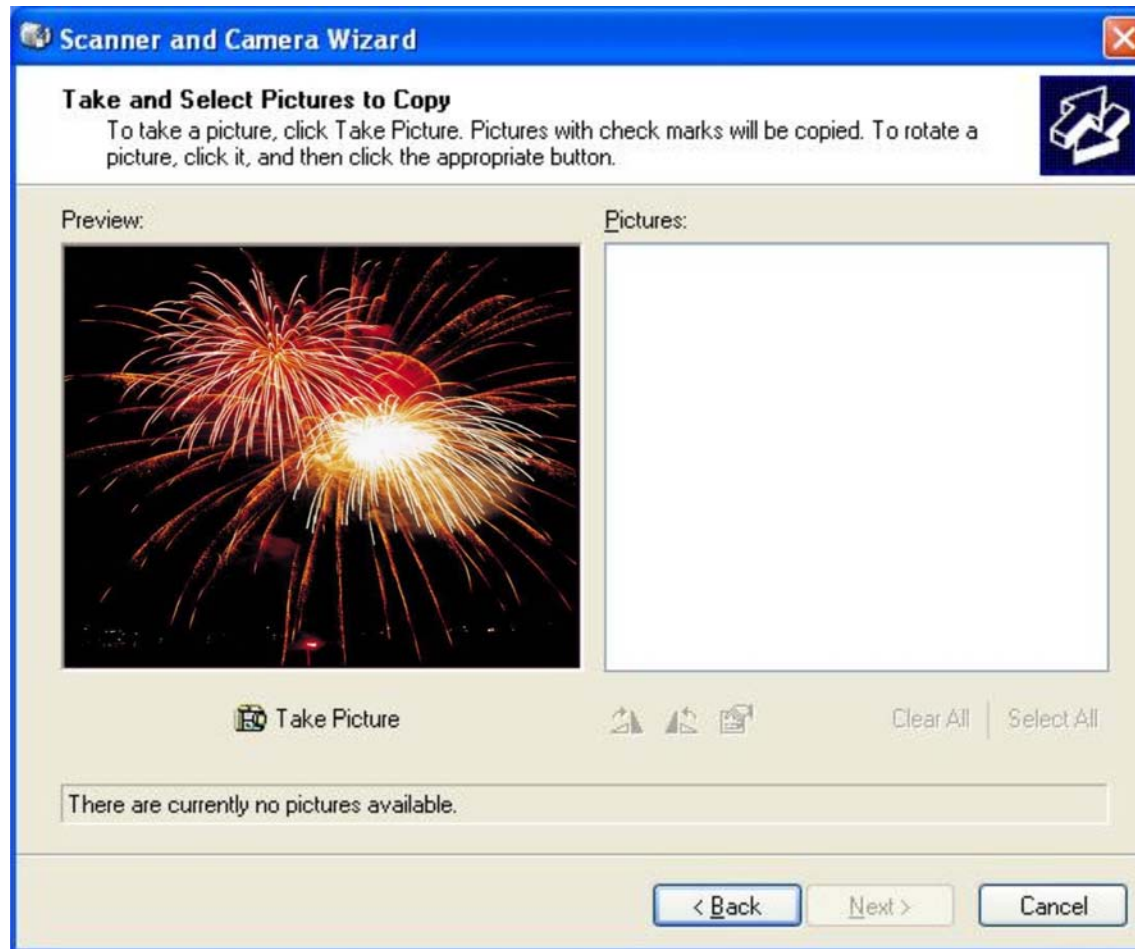
- ▶ Click on the “USB Video Device” to proceed.



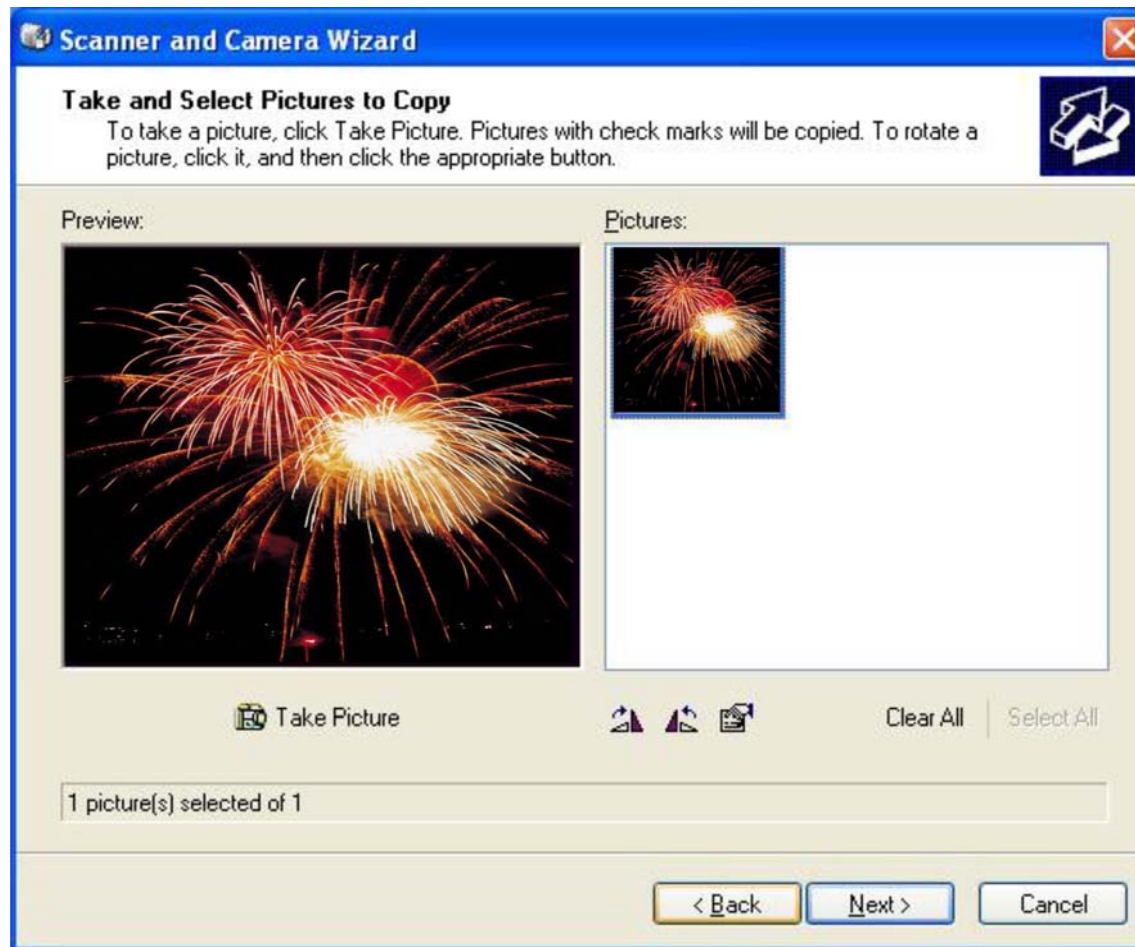
- ▶ Click on the "Next" button to proceed with the installation.



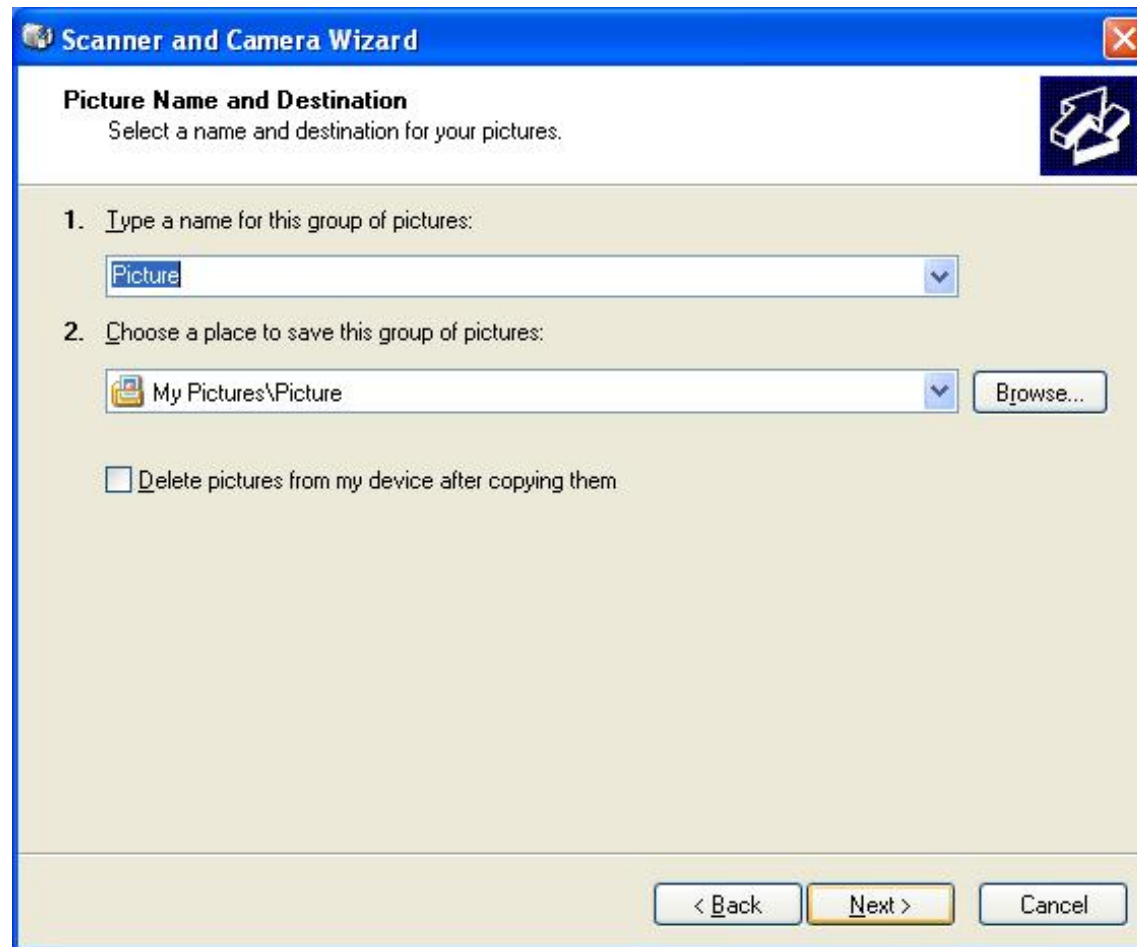
- ▶ Click on the "Take Picture" to capture the picture.



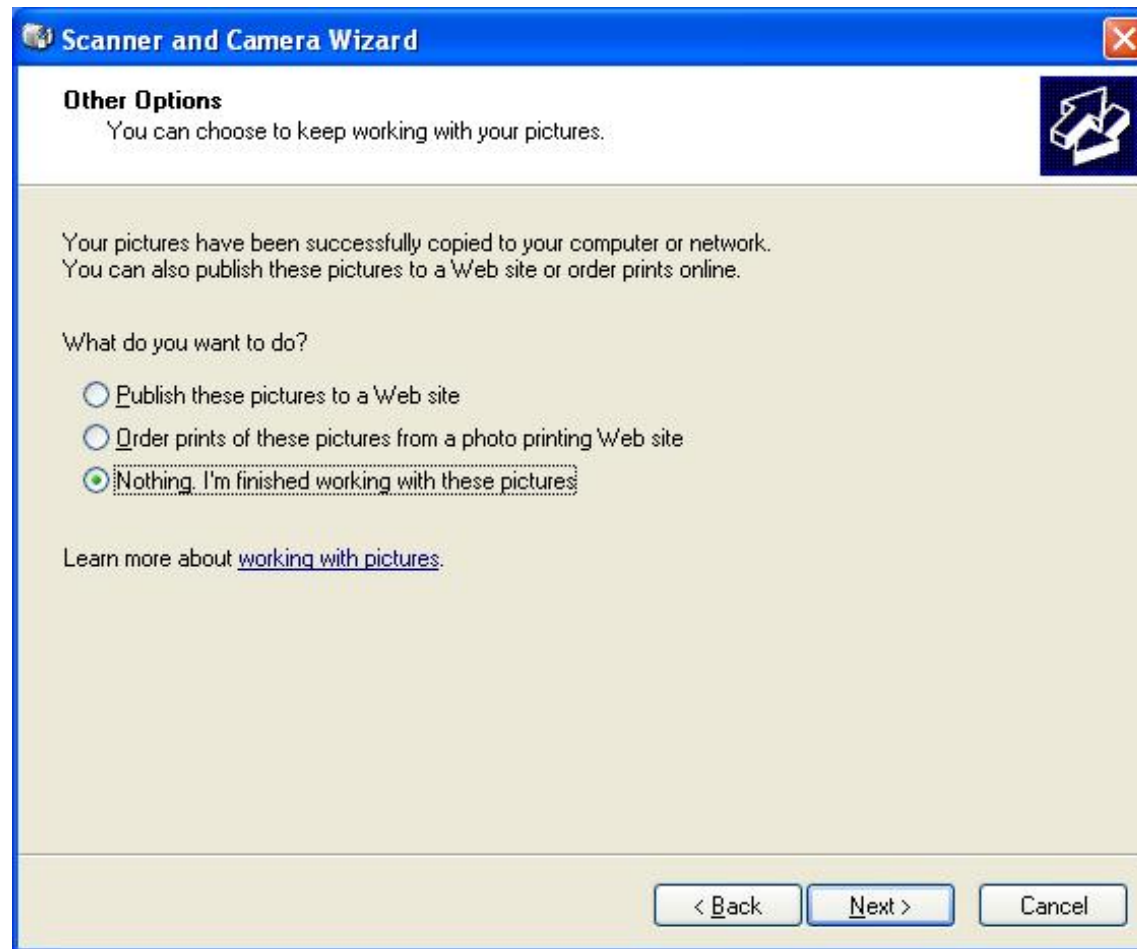
- ▶ The taken picture will appear on the right display.



- ▶ Click on the "Next" button to save the captured picture.



- ▶ You will have three options to deal with the captured pictures.



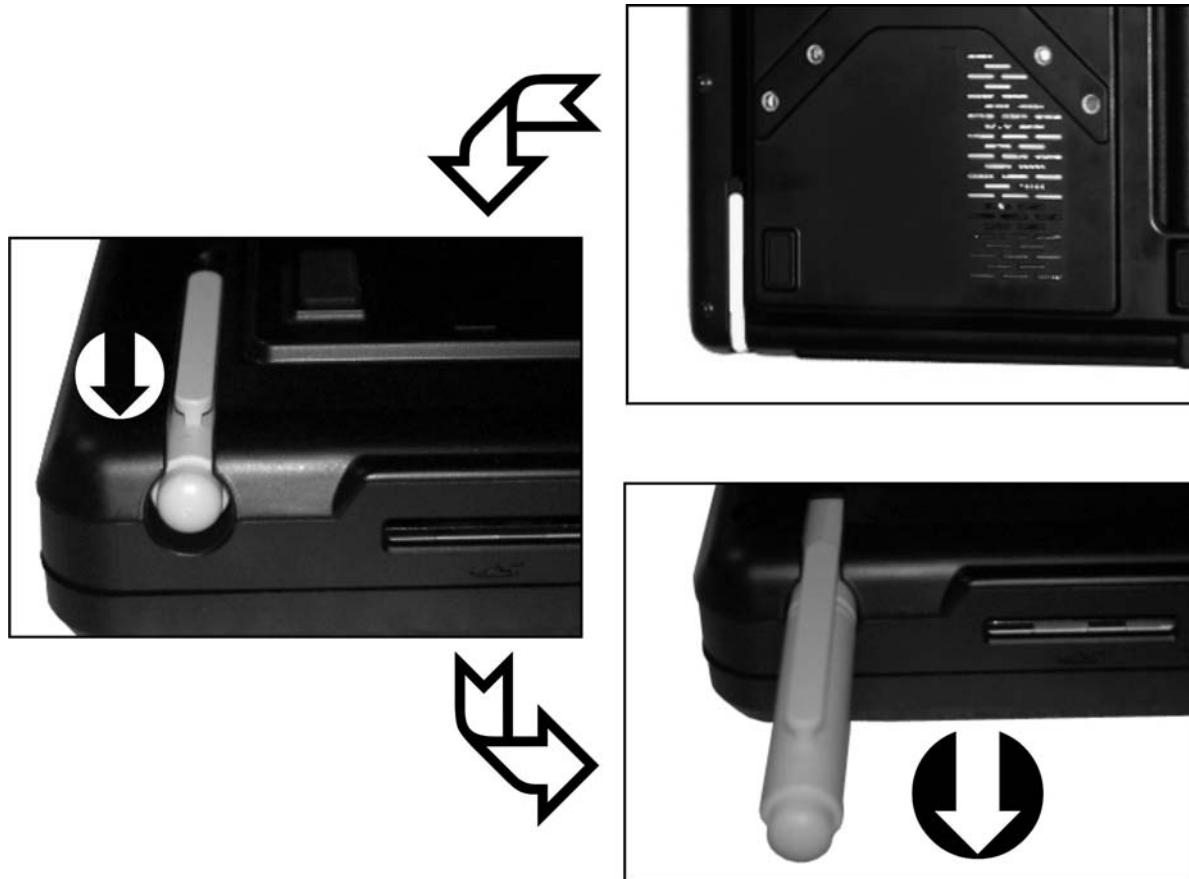
- ▶ Click on the "Finish" button to complete the saving of the captured picture.

- **Entering Information with the Pen**

***Pen***

---

Hold the pen as if you were writing with a standard pen or pencil.



# Chapter 5

## Troubleshooting

This chapter describes locating and solving problems that you may encounter while using your computer.

### ■ **General Hardware Problems / Possible Cause and Solution**

A few common hardware problems and suggested solutions are presented in the table below:

#### ***A freeze on the system during program operation***

---

An error occur during program currently being used.

Solution: An error with the Windows OS. Reboot the system using the Power button.

#### ***System Not Resuming Operation***

---

If the system will not resume operation after system operation has been suspended, check the following possible causes:

Solution: The battery may either be defective, or discharge to a critically low level. To correct this problem, connect an external power supply such as AC adapter.

#### ***The LCD screen is too dark or too bright***

---

Solution: Adjust the LCD brightness. Press the A-Menu button and click on Brightness Up or Brightness Down.

### ***Beeping sound***

---

Solution: Connect the computer to an external power source immediately.

### ***The system can not shutdown properly***

---

Solution: Press and hold the power button for 4~6 seconds until the system shutdown manually.

### ***What are the major steps to follow when the system does not turn on properly after it shutdown***

---

The system will turn after connecting the AC adapter, this indicates the battery is in low status.

Solution:

- ▶ Check if the LCD screen is accidentally press or the LCD toggle key.
- ▶ Remove the battery and connect the AC adapter to turn on and press on the Reset the button to turn on the system.

### ***How to extend battery life***

---

Solution:

- ▶ Adjust the display brightness to minimum level.
- ▶ Adjust the volume to minimum level.
- ▶ Disconnect all PC card not often used.

### ***Wireless LAN connection is disconnected after 2~3 minutes, and the connection is not recovered.***

---

Solution: The reason may be caused by channel interference, change the channel of the AP and reconnect.

### ***The computer is unable to connect to the Internet.***

---

Solution: Account for Internet service provider (ISP) is not properly configured. Ask for your ISP assistance.

### ***The Wireless LAN is connected, but I can not connect to or to another computer.***

---

Solution:

- ▶ Check the device driver is properly installed.
- ▶ Check that the device driver is properly installed. If the driver is not properly installed, you will find a yellow exclamation mark on the network icon by clicking Start > Control Panel > System > Device Manager > Network Adapters. If there is a yellow exclamation mark, please reinstall the device driver with the system software Media.

### ***The signal strength is excellent but cannot connect to the network.***

---

Solution: Check the TCP/IP properties are configured properly. When you connect to an AP, click the Wireless Network Connection icon on the taskbar and select the Support tab.

### ***Contacting Your Dealer***

---

If you still have a problem after reading the preceding section, the next step is to contact your dealer.

Your dealer can determine if the problem is something that requires the computer to be taken to the shop. Before you call your dealer, however, please have the following information available:

Solution:

- ▶ How is your computer configured? Your dealer needs to know what peripheral devices you are using.

- ▶ What messages, if any, are on the screen?
- ▶ What software were you running at the time?
- ▶ What have you done already to try to solve the problem? If you have overlooked a step, your dealer may be able to solve the problem over the phone.

### ***What steps should be taken when water accidentally get inside the Tablet PC***

---

Solution:

- ▶ At this time be sure not to power on the Tablet PC or else it will cause more serious damage to the computer
- ▶ Unplug the adapter and take out the battery. Disconnect as well if there are any external devices connected (like CD-ROM or flash drive)
- ▶ Pour out the water that got inside the computer and use a soft cloth to remove the stain to avoid any more damage
- ▶ Use the fan to dry the whole system and any peripheral then send it to the closest service center for experienced personnel to diagnose and repair. This will reduce the damage to the system
- ▶ As a special reminder, be sure not to put the computer inside the carry bag that has stain in sending the computer for repair

### ***The Tablet PC could not resume after it enter the Standby mode***

---

Solution:

- ▶ Standby Mode – allows the computer or program save into the RAM. The system will enter the saving mode. Press any key to resume the system
- ▶ Hibernate Mode – allows the computer or program save into the HDD. At this time the power is completely turn off. Press any key to resume the system

## ***The system can't resume operation***

---

Solution:

- ▶ Malfunction of external memory or internal memory – an error will occur during saving into the system memory, it will not execute normal operation
- ▶ External peripheral connected to the system not compatible – such as external USB devices, compact flash, MMC, Smart Media are complicated devices will easily cause the computer to enter standby mode thus unable to resume operation
- ▶ Un-suitable program or driver – any un-suitable driver could cause any extension file like .dll, .sys and .exe would not allow the system to enter standby or hibernate mode
- ▶ Operating System loses effect – the power saving mode of Microsoft operating system adopt ACPI mode (advanced Configuration and Power Interface), the power scheme will be handle by the OS thus affecting the power saving mode of the system

## ***Display problem***

---

**Problem:** Display LED too bright or too dark

Solution: Adjust the LED brightness, press the hotkey combination by brightness up or brightness down

**Problem:** The whole image does not display on the screen

Solution: This symptom will occur if you are executing any program or playing games design to run only on 800x600 resolution. Adjust the display to a higher resolution.

**Problem:** Can not execute any function

Solution:

- ▶ This only happens when the system is in hold status. Slide the power/hold switch to power on, this time the charge LED indicator will lit thus allowing you to restart your computer
- ▶ If you are operating the computer using the battery, examine the battery charge status

**Problem:** The power switch is not operating

**Solution:** This only happens when the system is in hold status. Slide the power/hold switch to power on, this time the charge LED indicator will lit thus allowing you to restart your computer

# Appendix A

## Specification

### *Operating System*

- ▶ Windows XP Home

### *CPU*

- ▶ Intel Diamondville platform Atom N270 533MHz FSB, 512KB, L2 Cache (1.6G)

### *Chipsets*

- ▶ Core Logic: 945GSE + ICH7-M
- ▶ VGA: 945GSE ultra low power integrated 3D graphics
- ▶ Audio: High Definition Audio

### *Memory*

- ▶ 1x DDRII SODIMM 533/667MHz

### *Maximum Memory*

- ▶ 2GB

### *BIOS*

- ▶ Insyde UEFI BIOS
  - Boot from USB
  - Plug & Play

- APM 1.2
- ACPI 2.0

### ***HDD***

- ▶ 2.5 inch SATA HDD 80GB default, max 160GB (option)
- ▶ SATA to CF card type II (option)

### ***Video***

- ▶ Intel 945 GSE, resolution 1024x600 as default

### ***LCD Display***

- ▶ 10.2", 1024x600 WXGA LCD

### ***Card Reader***

- ▶ Support SD/MMC card slot

### ***CMOS Camera***

- ▶ Built-in 1.3M pixel camera

### ***Audio***

- ▶ Realtek ALC268Q-GR

### ***Communication***

- ▶ Wireless 802.11 b/g (Mini PCIe) Qcom Ralink solution
- ▶ Touch panel 4 wires resistive (80 gram) + control board (USB)

### ***AC/DC Adapter***

- ▶ Miniature size compact adapter type
- ▶ AC 100~240Volt / DC 12V 3A 36W

### ***Battery Pack***

- ▶ 1 removable battery pack

### ***Power Management***

- ▶ Support For ACPI 2.0

---

***Physical/Mechanical***

- ▶ 192 (L) x 252 (W) x 28 (H-min) 36(H-mix) mm
- ▶ 1.18kg

***Accessory Kit***

- ▶ Stylus pen
- ▶ Power adapter
- ▶ Power Cord
- ▶ Support CD

***Regulatory Approval***

- Safety ▶ CB Report
- ESD ▶ Contact 4KV, Air 8KV
- RF ▶ FCC ID, CE, TELEC, DGT, SRRC